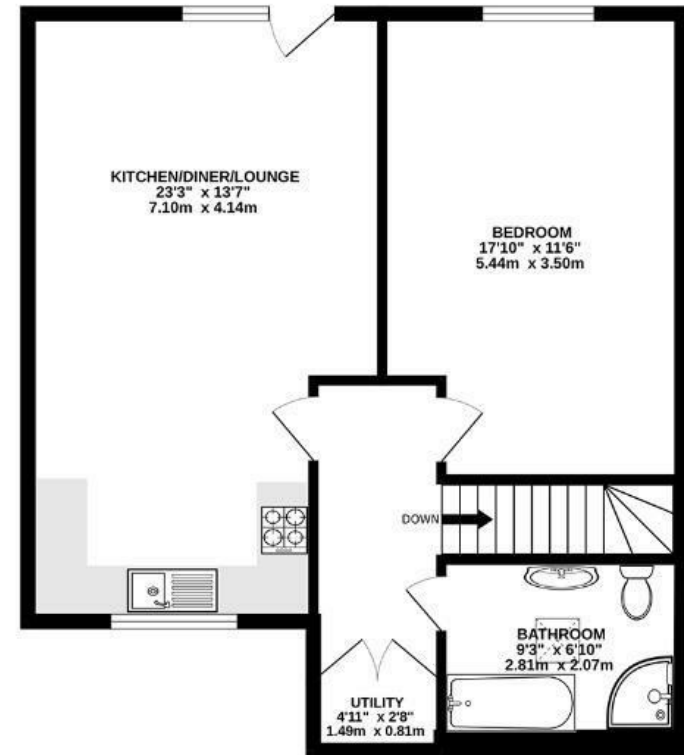
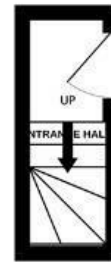


Mary Street

REDFIELD

APPROXIMATE FLOOR AREA
63.1 SQM / 679 SQFT



Illustrations are for reference purposes only, measurements are approximate, not to scale.

Boardwalk

12 Mary Street

REDFIELD, BRISTOL

£

£240,000



BS5 9FH

zZz

1 Bedrooms



1 Bathrooms

"We were so happy to find this unique flat. It's been fun creating our own hygge hq. We love taking in the views from the Juliet balcony while enjoying pastries from Bristol Loaf, which is dangerously close!"

